

# Magnetic Behavior in Solids



Paramagnetism



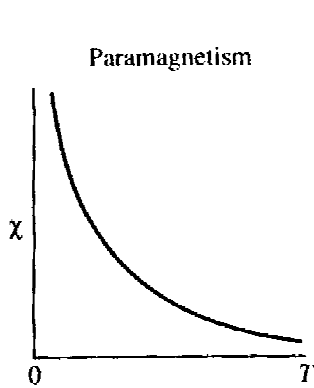
Ferromagnetism



Antiferromagnetism

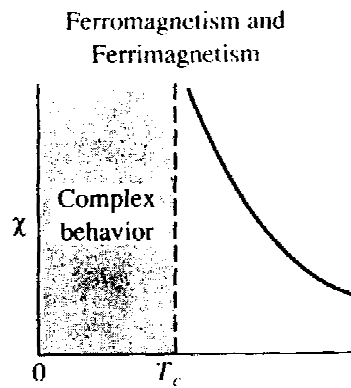


Ferrimagnetism



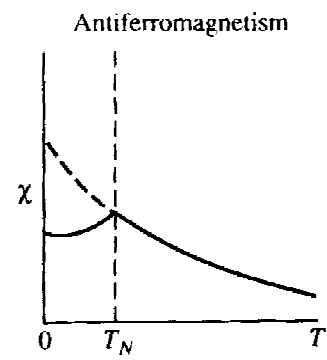
$$\chi = \frac{C}{T}$$

Curie law



$$\chi = \frac{C}{T - T_c}$$

Curie-Weiss law  
( $T > T_c$ )



$$\chi = \frac{C}{T - \theta}$$

( $T > T_N$ )