

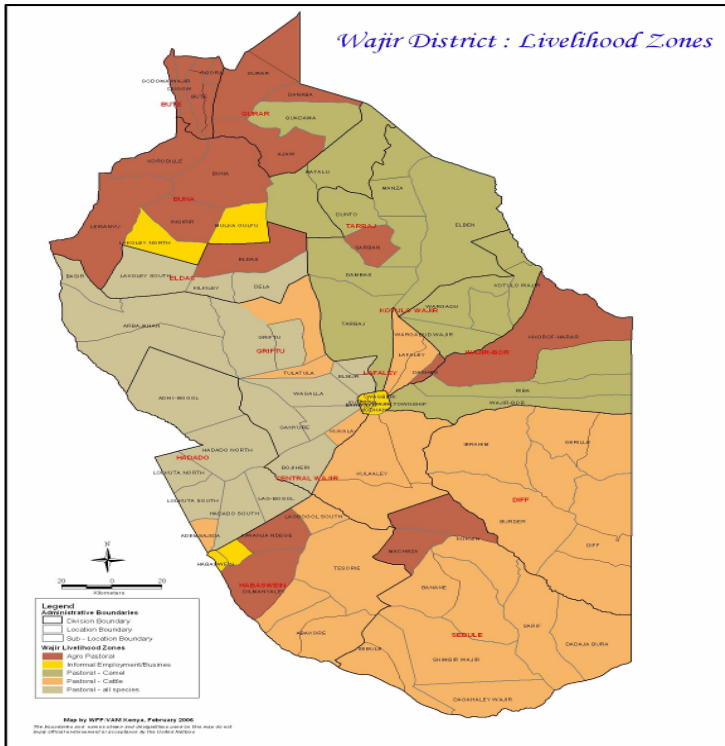


**OFFICE OF THE PRESIDENT
SPECIAL PROGRAMMES
ARID LANDS RESOURCE MANAGEMENT PROJECT II**

DROUGHT MONTHLY BULLETIN FOR NOVEMBER 2006

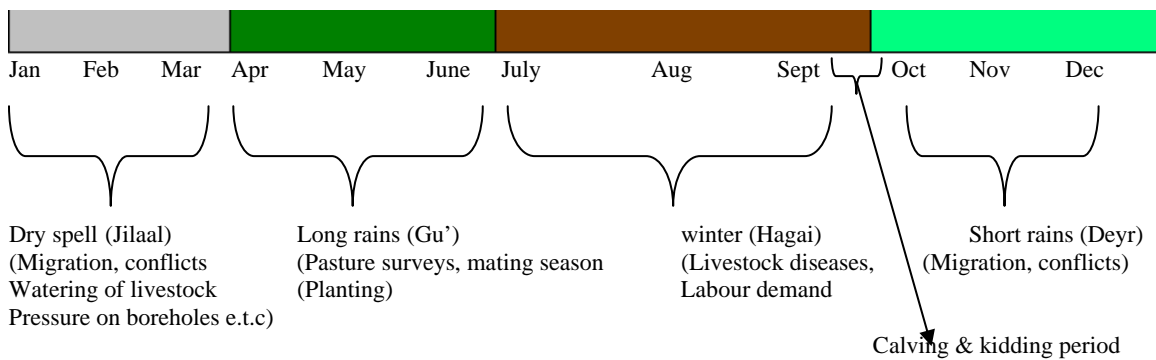
WAJIR DISTRICT

WARNING STAGES



LIVELIHOOD ZONE	WARNING STAGE	TREND
Pastoral-all species	Alarm	Improving
Pastoral - Cattle	Alarm	Improving
Pastoral - Camels	Alert	Improving
Agro-pastoral	Alert	Improving
Informal employment/ Business	Alert	Improving

TIME LINE



SITUATION OVERVIEW

The District received heavy rains from the on-set of the short rains. The first rains were received from 20th of October 2006. The rains were continuous with a break of 3 - 5 days towards the end of November.

The rains have picked up heavily in this first week of December.

- Ewaso Ngiro river flows in the southern part of the district flooded many areas and has made Dilmanyale, Abakore, Meri, Biyamathow, Sarif, Sabule Diif and Dadajabula completely inaccessible for the last one month. In addition there are large laggas e.g Laghbogol, Lagh Bor, Lagh Kotulo that flow all the way from Ethiopian highlands that has now flooded with the on-set of this heavy rains making many centres inaccessible and flooded including Arbajahan, Basir, Buna, Hadado, Burmayo, Machesa, Kursi, Burder, Arbajahan, Burmayo, Kajaja, Riba, Haragal, Konton, Khorof hara, Basanija, Ingirir, Buna, Korondille, Ogomdi.
- In other areas some water pans broke their banks and flood water is getting to the centres like Riba, Mansa etc.
- In Wajir town - Guguf, Minor W/S, Medina estate area is flooded with water in residential plots.
- Many shallow wells in Wajir Township have been contaminated with human waste through seepage as the result of flooding.
- Flash floods have swept Household shelters like Burder, Arbajahan, Hadado, BasinBurmayo, Kajaja, Konton, Sarif, Riba, Haragal, Basanija, Ingirir, Buna, Korondille, Ogomdi.

1.3 Affected/displace people

Over 50% of the population that was receiving relief food have not receive their food ration from October to date estimated at 195,000 persons.

1.4 Condition of access roads

- The main roads from Garissa, Isiolo and Mandera have been cut-off and only small 4 wheel drive vehicles could pass. No lorry or bus has reached Wajir town for a month and there is serious shortage of food, fuel and other commodities in all the centres including Wajir town.
- Over 30 (FDP's) food distribution points have not received relief food from October to date. The centre include Biyamathow, Sarif, Dadajibulla, diff, Salelma, Dilmanyale, Abakore, Korondille, Ingirir, Basir, Arbajahan, Hadado, Mansa, Basanija, Ogoralle, Burmayo, Lolkuta North and south, Garsegoftu, Athibohol, Ajawa, Batalu, Qudama, Danaba, Gurar, Bute, Ogomdi, Dugo, Ogorji, Lesanyu. All these roads are not accessible and the people in these centres have serious food shortage including sugar.
- Merlin that was handling nutrition could not access over 20 health facilities for the last 7 weeks. Similarly the MOH and other departments could not reach these centers and are likely to have shortage of medicine.
- Food prices have escalated where a bag of 50kg sugar is going for Kshs. 4,500 from Kshs. 2,300.

DSG Meetings and Recommendations

The DSG met during the month and recommended the following:

- Appeal for both food and non food items for most parts of the district.
- Provision of helicopters to deliver food for FDP's cut off by the floods/rains
- Transportation of medical drugs from KEMSA to health facilities throughout the district by air.
- Emergency supply of drugs to curb water related diseases, like the outbreak of dysentery in Diff.

1. STABILITY

1.1 Rainfall

- The short rain season started in the District towards the 2nd dekad of October in Bute area and intensified in the 3rd dekad of October in almost all the parts of the District. Generally good rains were received in the District but with less intensity to areas bordering Garissa District. Roads were washed away and over 50% of food distribution points were not accessible and did not receive relief food. Many centres including Wagalla, Kajaja, Katote and Haragal experienced floods and the relief food that was delivered was washed away or soaked in water posing the risk of Aflatoxin poisoning. The rains are expected to continue until the end of December. The following is the intensity of the rain in the month of November 2006.
- Habaswein - 135.6mm
- Buna - 278.7mm
- Bute - 432.8mm
- Gurar - 602mm
- Griftu - 216.00mm
- Diif - 899.9mm
- Khorof-Harar- 136.00mm
- Hadado - 336.0mm
- Wajir central- 340.6mm

Source: Wajir Meteorological station.

1.2 Natural Vegetation and pasture condition

- The quantity and quality of pasture and forage in all livelihood zones have improved greatly with the rains received and the forage is even expected to last in the next five months..
- The average distances covered to the grazing areas is to reduce greatly but due to the establishment of the wet and dry season grazing pattern all pastoralists have to move beyond a radius of 15km from the watering points.

1.3 Water sources and availability

- Most of the pans in the District have impounded water but many broke their embankment and hence reduced holding capacity. Water availability has greatly improved district wide. Water is now available in ponds and pans and the quality not as bad as last season that had carcasses drained in to them.
- All boreholes are not operational following the rains.

1.4 Emerging issues

1.4.1 Insecurity/Conflict/Human displacement

- The overall security situation is calm and there were no reported cases of insecurity.

Migration

- There were no major movements during the month under review save for slight relocations to areas with better pasture and water availability.

1.5 Implications on food security

- The availability of water and pasture will result in marked improvements in terms of livestock body condition and milk availability though the large stocks are still dry. This will in turn result in good market prices for livestock and therefore improve pastoralists' purchasing power.

2. AVAILABILITY

2.1 Livestock production

2.1.1 Livestock body condition

- Camel, cattle and small stock in all livelihood zones appear healthy and have improved in terms of body condition following the availability of forage and water during the last long rain season and is expected to improve greatly.

2.1.2 Livestock diseases

- High infestation of worms was reported in all the livelihood zones. Mass treatment of livestock is on-going district wide supported by VSF and Veterinary department.

2.1.3 Milk production

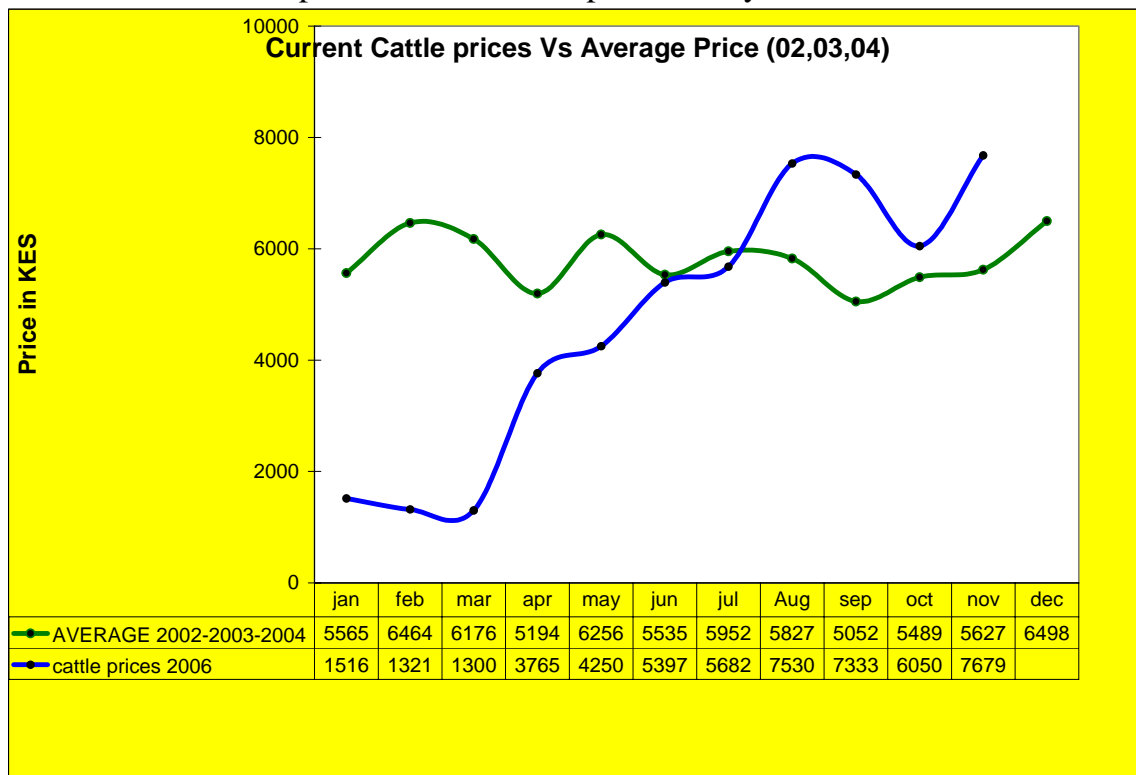
- Milk production has increased at a high proportion following enough availability of nutritious pasture though the last drought saw a large proportion of the milking herd perish.

3. ACCESS

3.1 Livestock marketing

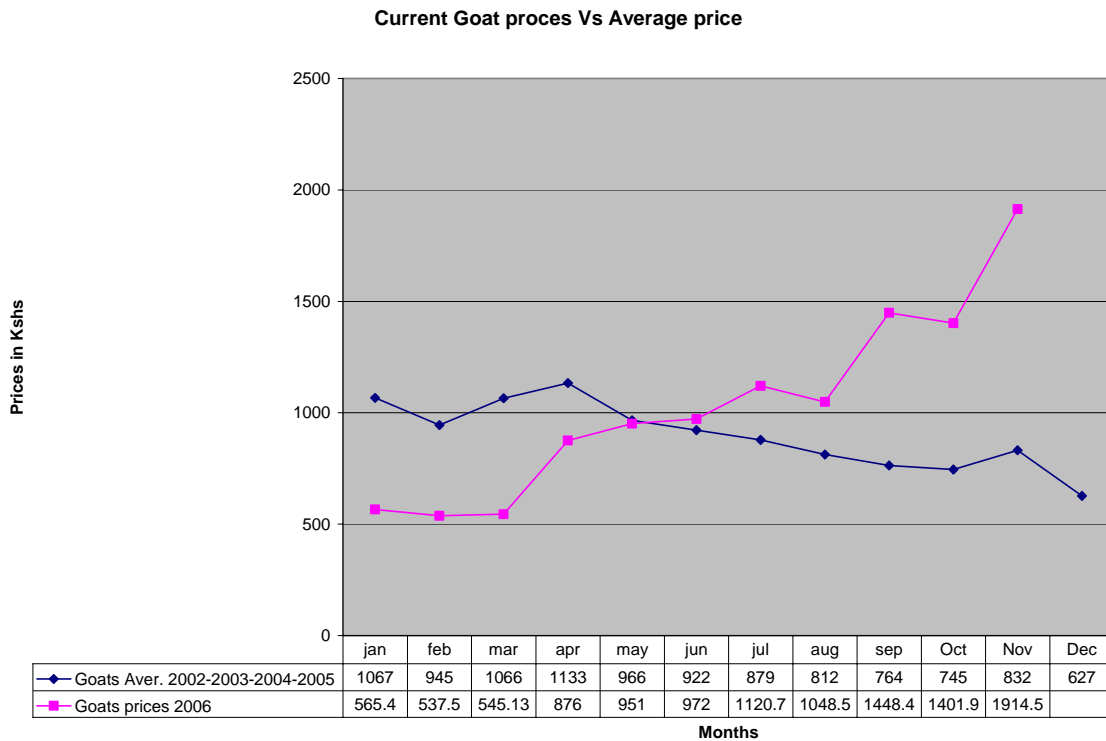
3.1.1 Cattle prices

- Average livestock prices registered a further increase compared to the previous month but the prices are above the long term average showing a remarkable improvement due to improved body condition.

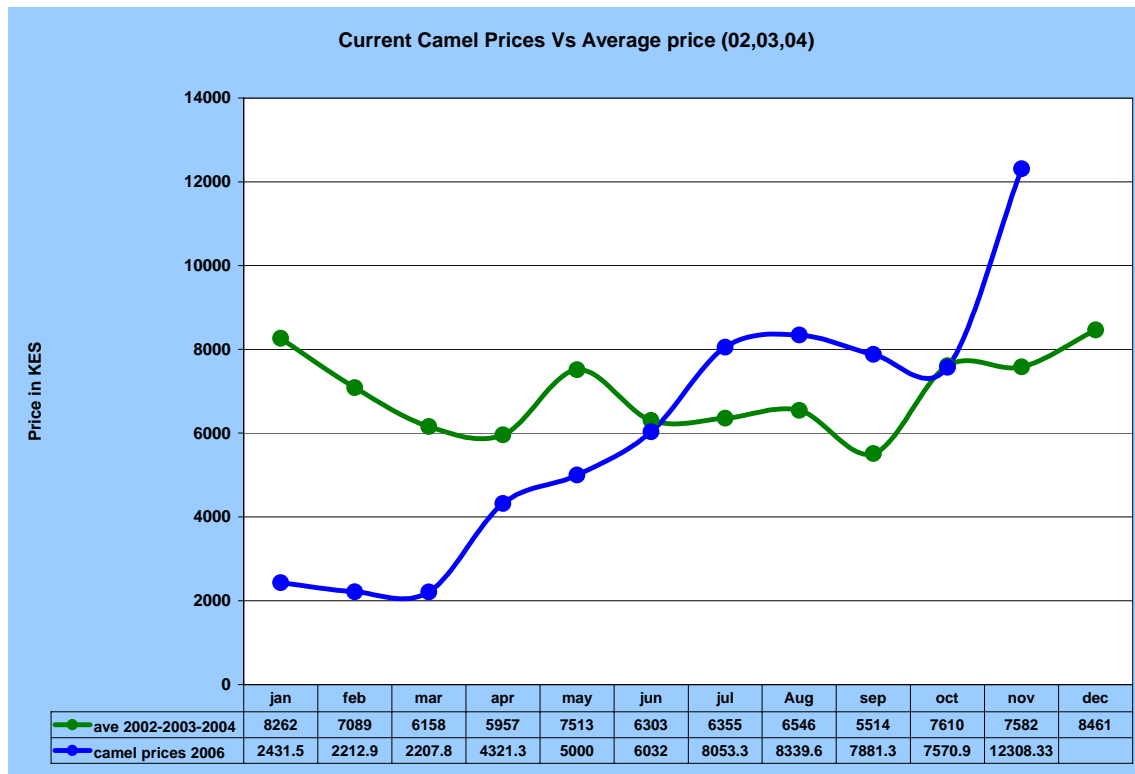


3.1.2 Goats – production and marketing

The average goat price registered increased tremendously to Kshs 1914.50/= from Kshs. 1401.90 in the month of September. The Goat prices are still the highest ever recorded showing high demand and few offered for sale since almost 50% were lost during the last drought.



3.1.3 Camel prices



- Camel prices have also increased compared to the previous month. The price increase is attributed to availability of enough pasture and improvement in nutrition status. Generally, the male camels prices are currently good as compared to many years and the prices indicated is a District wide average showing the pastoralist are selling young camels.

3.2 Livestock sales

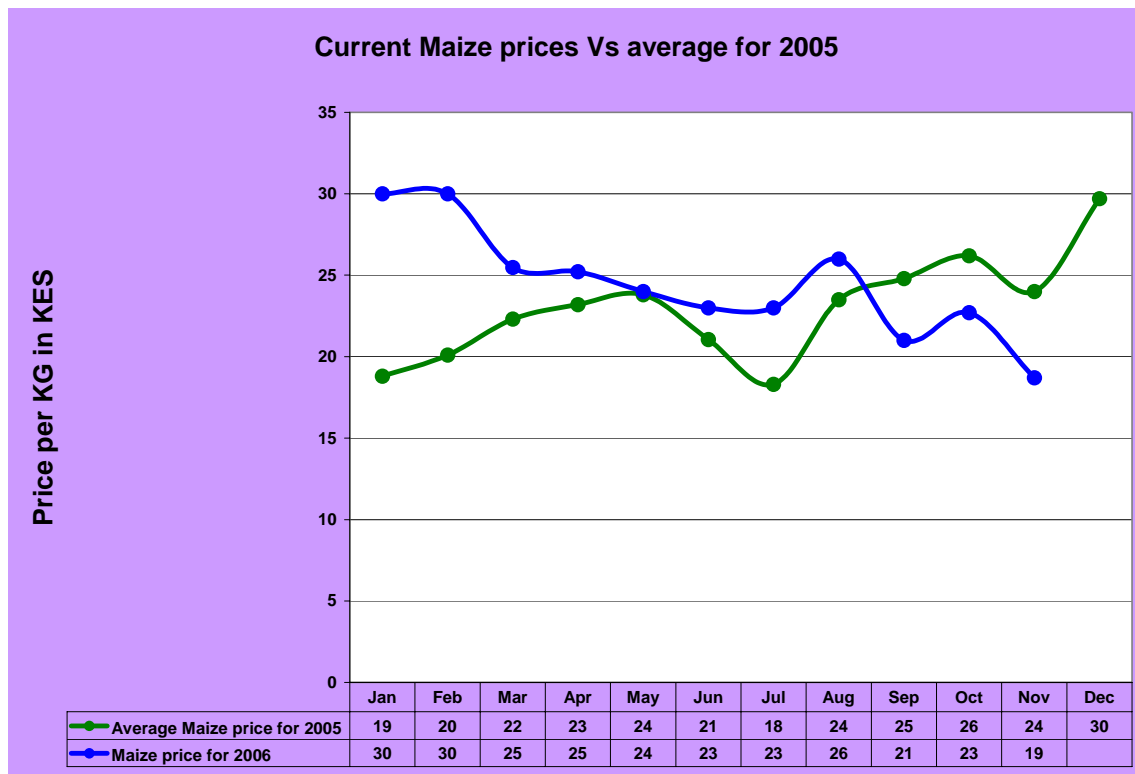
- The level of trade in cattle and small stock was fair. This is attributed to the improved body condition. However, the most important market remained Wajir livestock market where the bulk of trade took place. Divisional markets equally recorded some sales especially Habaswein but this was limited to small stock.

3.3 Milk consumption

- Milk consumption have increased since most of the livestock started kidding towards the end of last month and consumption of milk especially young children have increased hence improving the nutrition status of under five..

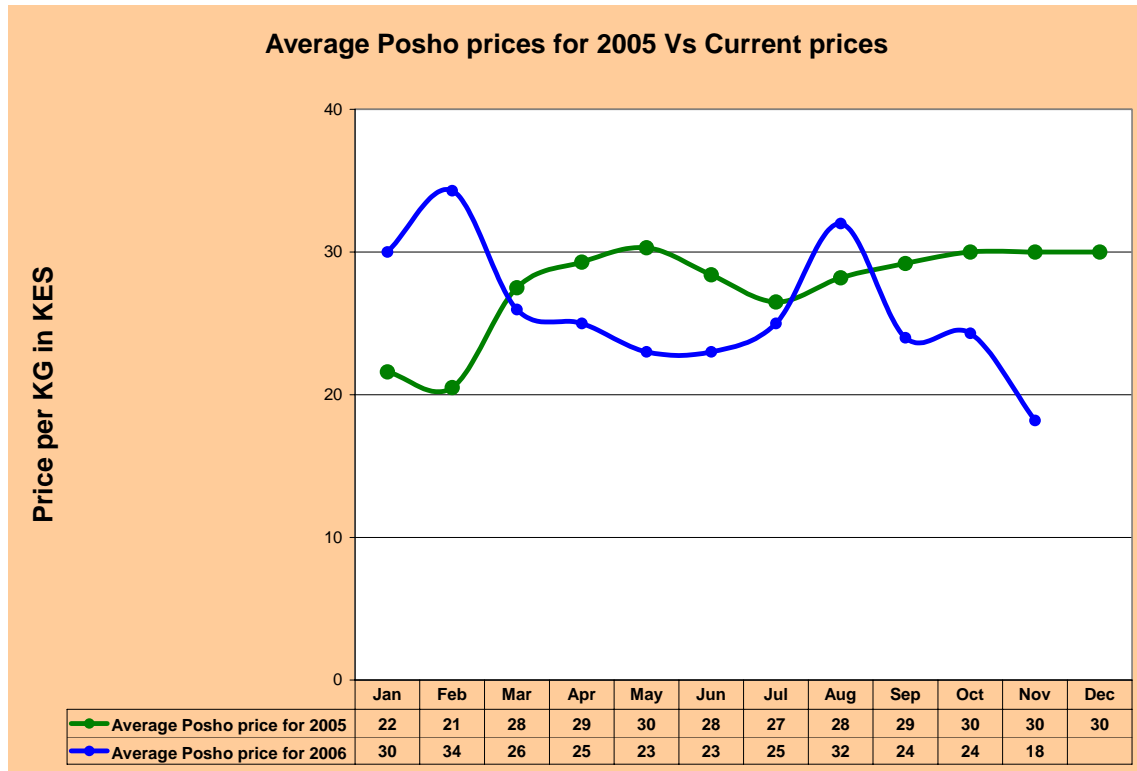
3.4 Crop prices

3.4.1 Maize



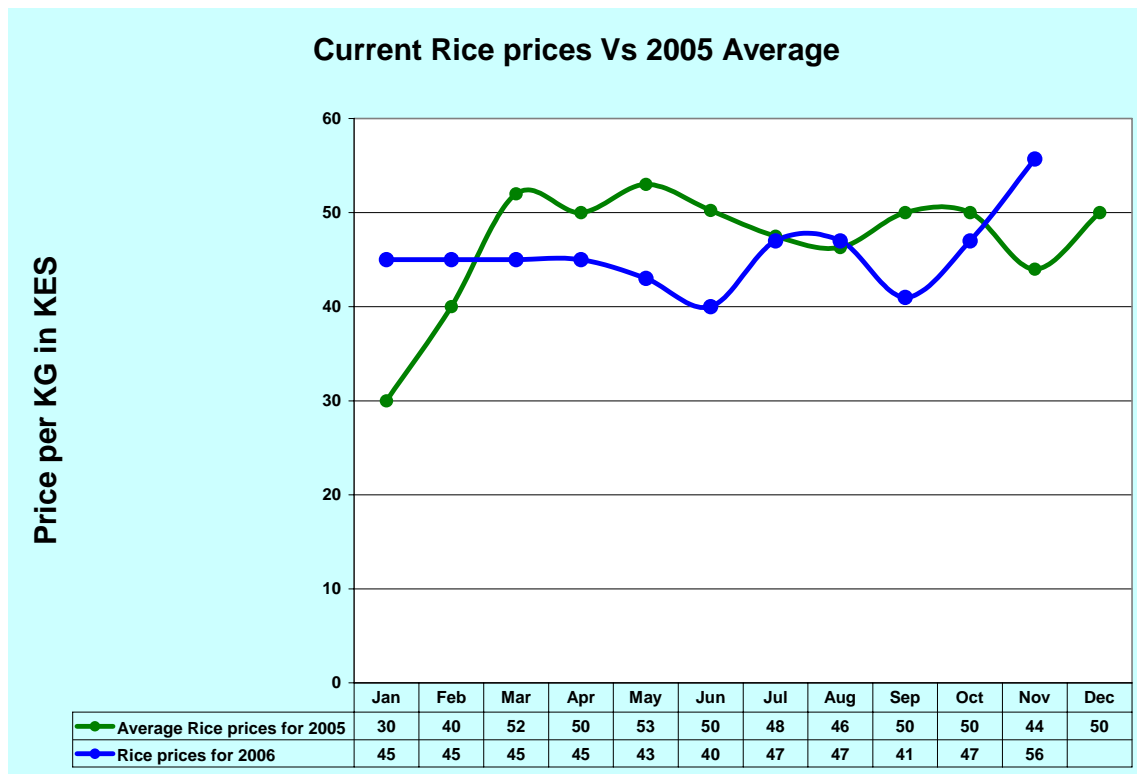
- Maize prices slightly increased as compared to the previous month. However, the price seems lower as compared to the same time last year due to the EMOP operations where Maize was distributed as the key cereal ingredient in the food aid.

- **Posho (Maize meal)**



Average Posho prices stabilized and the prices are still lower than the average for 2005. The demand is still low owing to the on-going relief food distribution by GOK and WFP.

3.4.2 Rice



- The price for rice increased during the month as compared to previous month due to the rains that has rendered the roads impassable. Similarly the prices of other commodities including sugar increased tremendously.

3.5 Income

3.5.1 Livestock income

- Livestock sales is low as the pastoralists hesitate to sell their livestock due to low physical strength and sentimental value attached to it, but livestock sales is still the major income earner for all livelihood zones.
- Even in small business livelihood zone, most people engage in livestock trade as brokers or middlemen or small-scale traders.

3.5.2 Crop income

- Farmers in the agro-pastoral livelihood zone who planted during the long rains period registered very small harvests especially for Sorghum. Small scale farmers in Wajir central have shown improved income due to increased sale in vegetables, fruits and grass through bucket irrigation.
- The poor harvest is attributed to pest and disease infestation. Inadequate rain is also a major reason for the poor harvests.
- A good harvest is expected where crops have been cultivated especially in the northern part of the district with emphasize in pest control measures.

3.5.3 Other income (trade, Wages E.t.c.)

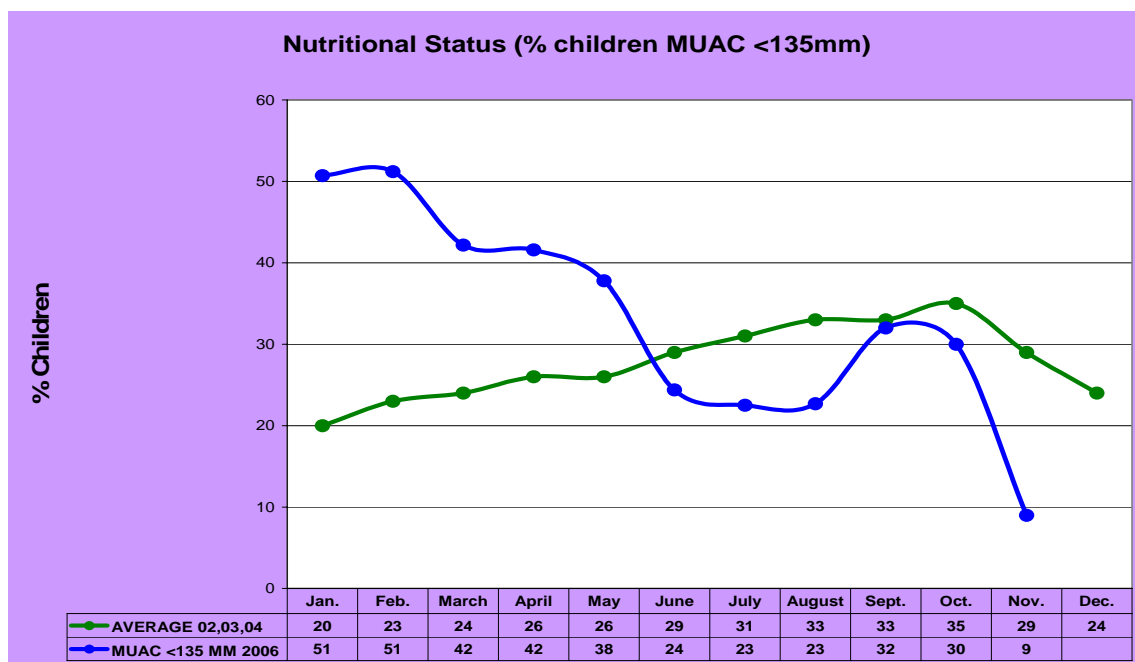
- Milk vending, Miraa sales, charcoal and firewood selling as well as casual labour continued to be alternative sources of income especially in Small business/informal livelihood zone. This shows that there is little or no diversity in other livelihood zones.

3.6 Implications on food security

- The livestock body condition has improved; this has led to improvements in terms of livestock production parameters and as well as the immunity against diseases.
- The improvements of livestock prices will boost pastoralist purchasing power.
- The small harvests registered in the agro-pastoral areas and increased production will improve household food security.
- Nutritional status will improve as a result of improved milk production from goats and sheep.
- Increasing prices of rice and sugar will result in reduced purchasing power.

UTILIZATION

3.7 Nutrition status



- The nutritional status of children < 5 years that recorded MUAC < 135 mm slightly reduced to 24% as compared to 30% of the previous month and these is attributed to abundant supply of milk.

Health

- Malaria, URTI and diarrhea were reported to be the leading causes of morbidity in all livelihood zones. Outbreak of chickenpox was reported in Dambas. Polio case was reported in Daadab refugee camp.
- Bilharzias are still a problem in Diff division following the long rains.
- Outpatient therapeutic feeding and supplementary feeding intervention is ongoing in 12 divisions while inpatient therapeutic feeding at Wajir District Hospital TFC supported by Merlin, MOH and GTZ.
- Despite this intervention few cases of malnutrition are reported especially in Sebule, Habaswein and Griftu divisions.
- Cases of cholera have been reported in the neighboring Moyale district and cross boarder surveillance have been intensified and the district is on alert.

3.8 Flagged areas

- The above divisions still remain flagged areas as far as malnutrition is concerned.
- Diff still remain under the constant threat of Bilharzias.

4. Current intervention measures

- The following interventions are currently going on in the district implemented either by Government agencies or Non governmental organizations.

4.1 Non Food interventions

- Restocking/Redistribution of shoats and Drought recovery cash for work initiative especially shelter is undertaken by OXFAM.
- Support to mobile school education through ALRMP and MOEST.
- Support to small scale farmer in Wajir central with Agricultural tools by ALRMP.
- Emergency hygiene and sanitation campaign conducted by Oxfam, Merlin and Public Health department covering 6 divisions.
- Immunization campaigns as well as outreach services by Ministry of Health and Merlin. Mass treatment of livestock by VSF/Veterinary.

4.2 Food aid

- EMOP relief food distribution by WFP through lead agency, Oxfam and implementing partners (ALDEF & WASDA) is on-going.
- Outpatient therapeutic feeding and supplementary feeding program by Merlin in 12 Divisions

5. Recommendations

- KFSSG to adjust the population of Wajir as per CBS figure of 505,000 persons and relief food targeting to be adjusted accordingly.

- EMOP relief food should continue to allow for meaningful recovery from the stress of the recent drought. Increase relief food targeting for Central from 30% to 70%.
- Setting up mobile outreach would assist improve the immunization coverage as well as enhance treatment of common ailments.
- Provision of bursaries for secondary schools and middle grade college students to provide relief for families after the severe drought and guard against dropouts.
- Restocking for the families that lost all their animals and supporting families who lost the breeding stock to enable them build their herd.
- Support to drought recovery initiative e.g. provision of shelter.
- Support and strengthen cross boarder surveillance in terms of resources to cap the outbreak of cholera.
- Support the IDP as the result of floods with shelters and other necessities
- Provision of ITN since breeding of mosquitoes has increased as result of the downpour.

END