

Tulane Environmental Law Society Presents

Tulane's
11th Annual
Environmental Conference



Environment 2006

Law, Science, and the Public Interest

Program

This year's conference brings academic, practical, and popular perspectives to current issues, including:

Rebuilding and Repopulation in the Hit Zone

MRGO: Open or Closed?

O&G Impacts and Liability

Levee Failure and Liability

Talkin' Trash Post-Katrina

The Past Present and Future of the Lake Maurepas and
Manchac Swamps

Rebuilding Healthy Families

1 Cat, 1 Dog: How the Animals Weathered the Storm

Bio Mass and Alternative Energy

Special Session Speaker

Steve LeGore

Fisheries Recovery Following the Indonesian Tsunami: Process, Issues, and Parallels with Gulf Coast Recovery

Keynote Speaker

Vijay Vaitheeswaran

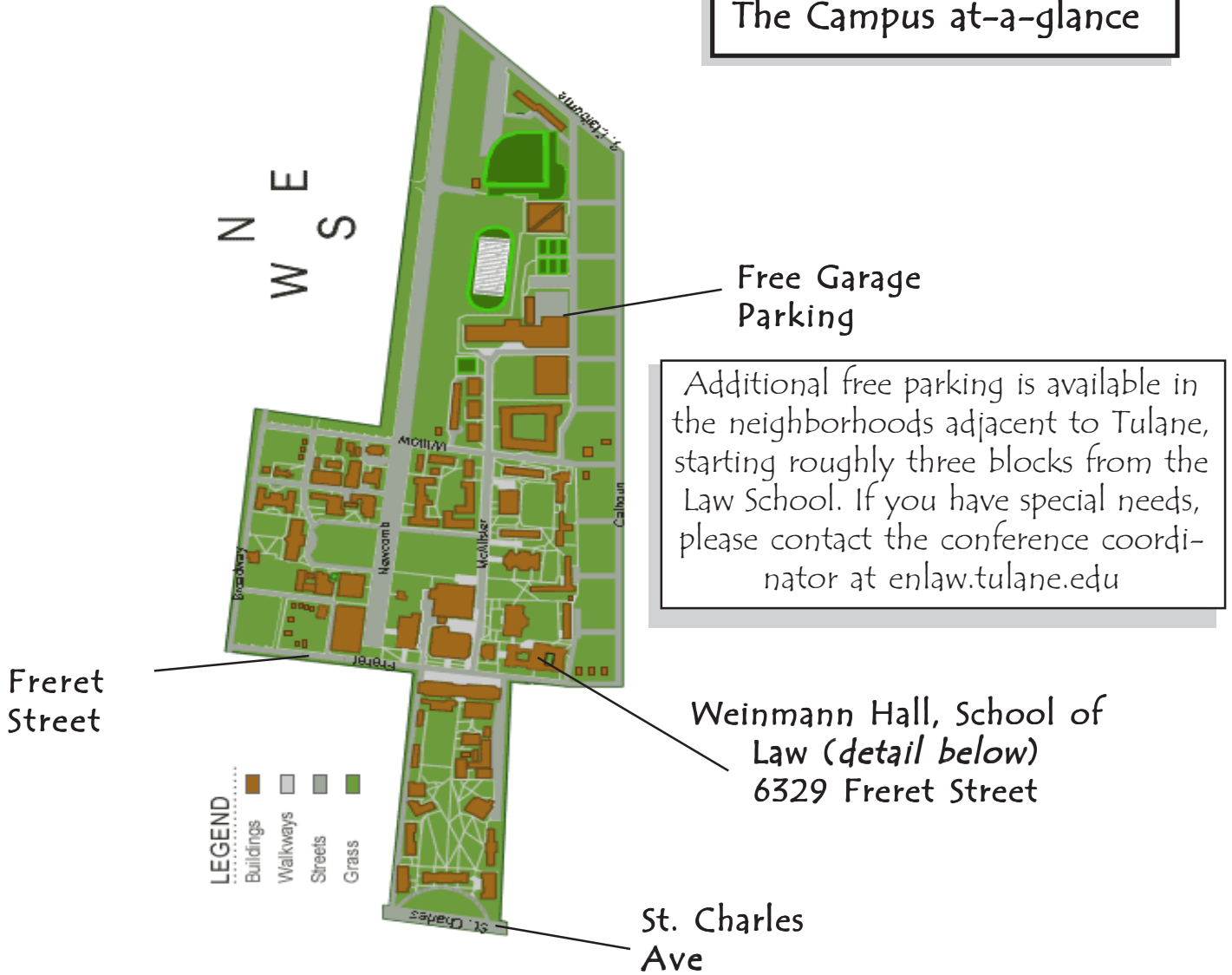
MR. VAITHEESWARAN is the Global Environment & Energy Correspondent for *The Economist*, and author of "POWER TO THE PEOPLE: How the Coming Energy Revolution will Transform an Industry, Change our Lives, and Maybe Even Save the Planet" (www.vijaytothepeople.com).



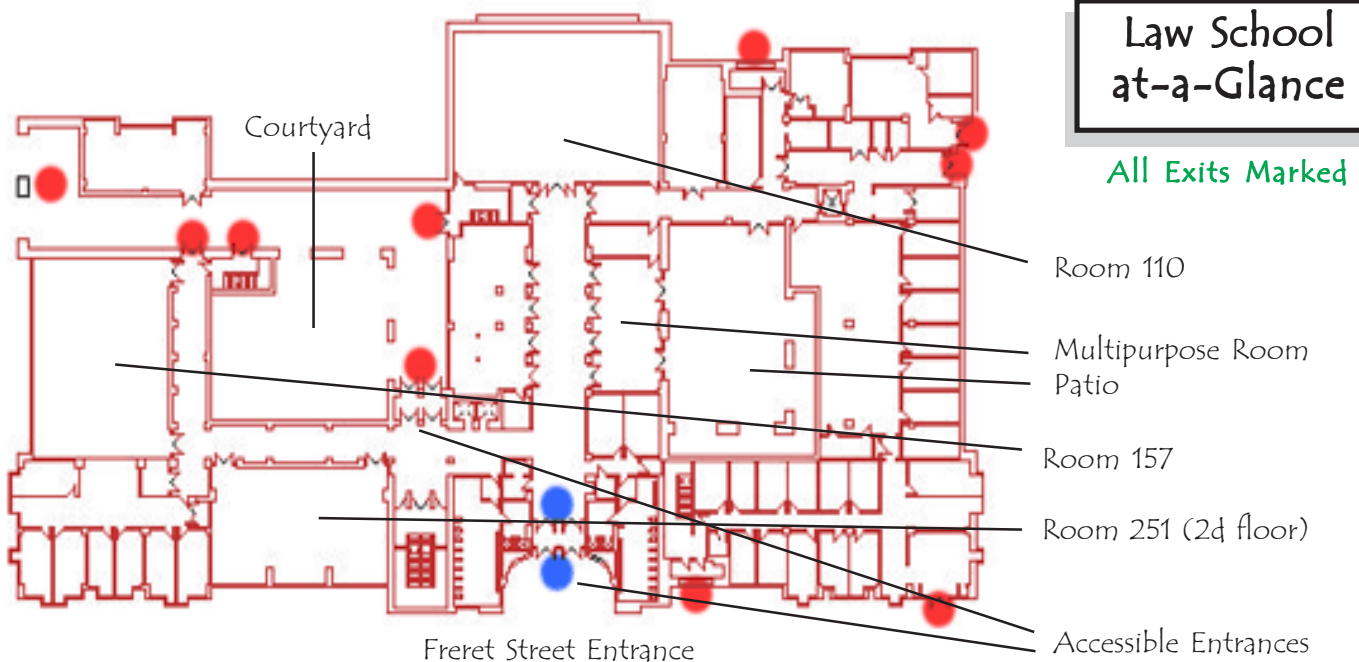
Hosted by the Tulane Environmental Law Society

Welcome to Tulane University School of Law

The Campus at-a-glance



Law School at-a-Glance



Room Assignments

(all rooms in John Giffen Weinmann Hall, School of Law)

First Floor Hall / Lounge

Registration
Exhibits
Journal Sales

Multipurpose Room & Patio

Coffee Breaks
Saturday Lunch
Evening Reception

Room 251

IN THE CITY

1 CAT, 1 DOG: HOW THE ANIMALS WEATHERED THE STORM

LEVEE FAILURE AND LIABILITY
(Debate Panel)

TALKIN' TRASH POST-KATRINA

Room 157

CULTURE AND THE ENVIRONMENT

REBUILDING AND REPOPULATING

REBUILDING HEALTHY FAMILIES

BIOMASS AND ALTERNATIVE ENERGY

Room 110

PROTECTING COASTAL WETLANDS

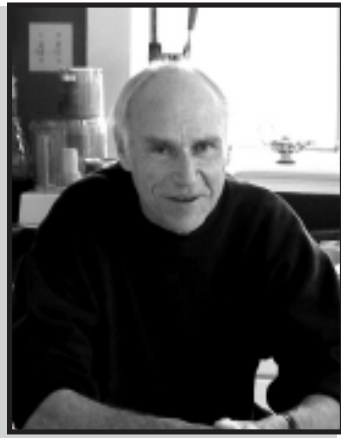
O&G IMPACTS AND LIABILITY

LAKE MAUREPAS AND MANCHAC SWAMPS

MR-GO: OPEN OR CLOSED?

SPECIAL SESSION & KEYNOTE

Have a Question? Ask one of these people, or any of our student volunteers!



Professor Oliver Houck
Our Esteemed Faculty Advisor

Not Pictured:

Tina Hanson
Logistics Guru

John Binder
Speaker Chair

Alicia Smith
Food and Entertainment

Matt Fraser
Publications

Elizabeth Nagelin
Assistant Coordinator



Kathy Harrison
Conference Consultant

Lauren Hassler
Conference Coordinator

Rina Eisenberg
Speaker Chair

Todd Campbell
Speaker Chair

Saturday, April 1, 2006

9:00 am - 2:00 pm **Registration**

9:00-9:40 **Breakfast and Coffee with the students in the MPR**

9:40-9:55am *Room 110* **Opening Ceremonies - Welcome to the Conference!**

Theme 1 - Room 251 In the City

10:00-11:30 am **1 Cat, 1 Dog: How the Animals Weathered the Storm**

*Laura Maloney, Louisiana SPCA
Kathryn Destreza, Louisiana SPCA
Parke Moore, Louisiana Dept. of Wildlife and Fisheries
Dana Campbell, Animal Legal Defense Fund
Laurie Redman, Attorney*

Theme 2 - Room 157 Culture and the Environment

Rebuilding and Repopulating in the Hit Zone

*Richard Campanella, Tulane Center for Bioenvironmental Research
Jeff Thomas, Attorney Simon, Peragine, Smith & Redfearn
Rod Emmer, Louisiana Floodplain management Association*

Theme 3 - Room 110 Protecting the Coast

O&G Development and Liability

*Duke Williams, Attorney St. Martin & Williams
Michael Lyons, Louisiana Mid-Continent Oil & Gas Assn.
Eugene Turner, Coastal Ecology Institute, LSU*

11:30 - **Lunch on the Patio**

12:30 pm

12:30 - **Special Session - Room 110: Fisheries Recovery Following the Indonesian Tsunami: Process, Issues, and Parallels with Gulf Coast Recovery** *Steve LeGore, Ph.D. and (see program insert)*

1:45 - 3:30 pm **Levee Failure and Liability**

*Jonathan Nash, Tulane Law School
Adam Babich, Tulane Environmental Law Clinic
Pat Martin, LSU Law Center
Paul Kemp, LSU School of the Coast and Environment
William O'Neil,*

Rebuilding Healthy Families

*Shawn Eller, 15th Judicial District Court in Lafayette
Monique Harden, Advocates for Environmental Human Rights
Nathalie Walker, Advocates for Environmental Human Rights
Bernadette D'Souza, New Orleans Legal Assistance*

The Past Present and Future of the Lake Maurepas and Manchac Swamps

*Robert Moreau, SLU Turtle Cove Environmental Research Station
Julia Simms, Wildlife Photographer
Al Dranguet, Southeastern Louisiana University
Roman Heleniak, Southeastern Louisiana University
Gary Shaffer, Southeastern Louisiana University
Mark Davis, Coalition to Restore Coastal Louisiana*

3:45 - 5:30 pm **Talkin' Trash Post-Katrina**

*Robert Verchick, Loyola Law School
Charles Reith, Sustainable Systems, Inc.
Chuck Brown, Brown & Associates
Joel Waltzer, Waltzer & Associates*

Bio Mass and Alternative Energy

*Andy Taggart, Board of Supervisors, Madison County, Mississippi
Victor Law, Tulane University
Paul Breslow, Tulane University*

MR-GO: Open or Closed?

*Jerry Speir, Louisiana Environmental Action Network
Pam Dashiell, Holy Cross Neighborhood Assn.
Hassan S. Mashriqui, LSU Hurricane Center*

Evening Events Continued on next page...

5:45-6:45 pm **Keynote Address: Vijay Vaitheeswaran** Room 110

MR. VAITHEESWARAN is the Global Environment & Energy Correspondent for *The Economist*, and author of "POWER TO THE PEOPLE: How the Coming Energy Revolution will Transform an Industry, Change our Lives, and Maybe Even Save the Planet" (www.vijaytothepeople.com).

6:45 pm

Reception ~ Live Music and Local Fare!

Panel Abstracts

Rebuilding and Repopulating in the Hit Zone addresses the historic and current impacts of oil and gas development on the coastal zone, increased vulnerability of New Orleans and coastal communities, and potential liability.

Rebuilding Healthy Families addresses challenges for attorneys in the public interest sector in addressing the health, safety and environmental justice issues of families returning to some of the worst-hit areas of New Orleans.

Biomass and Alternative Energy addresses alternative energy policy and law with respect to bio-fuels: Are they a good answer? Is this one way for New Orleans to deal with organic waste disposal?

O&G Impact and Liability addresses historic and current impacts of oil and gas development on the coastal zone, increased vulnerability of new Orleans and coastal communities, and potential liability.

Levee Failure and Liability addresses the causes and consequences of levee failure, including pending litigation.

Fisheries Recovery Following the Indonesian Tsunami: Process, Issues, and Parallels with Gulf Coast Recovery

Dr. LeGore recently developed a Fisheries Management Action Plan as a component of the USAID Sri Lanka Tsunami Reconstruction Program (SLTRP), directed toward development of recommendations to improve the fisheries value chain while promoting responsible stewardship of coastal resources. The effort was focused on the Fishery Harbors at Dondra, Mirissa and Hikkaduwa, which are scheduled for post-tsunami reconstruction within the SLTRP, but wider ranging recommendations were also provided in the hope that they will be advanced by interested parties. Dr. LeGore will discuss the process and issues encountered during this program.

Dr. LeGore's presentation will be followed by a discussion, led by Professor Oliver Houck, about the legal implications of LeGore's work and will emphasize the parallels between the restoration efforts following the tsunami disaster in Indonesia and following Hurricane Katrina on the Gulf Coast.

The Past, Present and Future of Lake Maurepas and Manchac Swamps addresses the history, hurricane impacts and restoration policy for the major cypress swamps surrounding New Orleans.

MR-GO: Open or Closed? considers the impacts of the Mississippi River Gulf Outlet on the delta and its relationship to flooding during Hurricane Katrina. The panel examines the environmental and economic impacts of closing the outlet.

1 Cat, 1 Dog: How the Animals Weathered the Storm addresses animal rights and rescue that have arisen during and after Hurricane Katrina. It also examines the impact of the hurricane on wildlife in the hit zone.

Talkin' Trash Post-Katrina addresses disposal practices and options for white goods, demolition debris, entire households, and includes discussion of recent litigation and pending proposals.

Speaker Biographies (very abridged)

Adam Babich teaches environmental law and directs the Tulane Environmental Law Clinic. Before joining the Tulane faculty, Adam was a Chicago-based litigator whose practice emphasized environmental and insurance-related disputes. He has taught at Georgetown University Law Center, American University, and the University of Denver and has an extensive publications record.

Paul Breslow obtained his Doctor of Philosophy in Mechanical Engineering, in 2003 from Tulane University School of Engineering. He is author of Breslow PB, Sailor DJ. Vulnerability of wind power resources to climate change in the continental united states. *Renewable Energy*. 2002, and Sailor DJ, Breslow PB. Developing improved tools for electric utility peak load forecasting. *American Meteorological Association, Conference Proceedings*. 2001.

Chuck Brown has a Bachelor of Science in Chemistry from the University of Southern Mississippi, a Master of Public Administration, from Southern University A & M College, and a Doctorate of Philosophy in Public Policy/Environmental Policy from the Nelson Mandela School of Public Policy and Urban Affairs at Southern University A & M College in Baton Rouge. Brown is President and CEO of Brown and Associates, a firm specializing in training and development, strategic planning and program evaluation.

Richard Campanella, Geographer, is the assistant director of Tulane's Center for Bioenvironmental Research and a research professor in Earth and Environmental Sciences. His work entails the application of mapping sciences to physical, biological, and social science research. Campanella is the author of three books, including the award-winning *Time and Place in New Orleans: Past Geographies in the Present Day* (2002) and the forthcoming

Speaker Biographies (very abridged)

Geographies of New Orleans: Urban Fabrics Before the Storm (2006). He has published articles in the *Annals of the New York Academy of Sciences*, *Photogrammetric Engineering and Remote Sensing*, and *EOS Transactions-American Geophysical Union*.

Dana Campbell is the Managing Senior Attorney of the Animal Legal Defense Fund's Criminal Justice Program (ALDF). ALDF is a national non-profit organization dedicated to enforcing and enhancing laws affecting the welfare of animals. She is also the coordinator of ALDF's legal and volunteer projects related to Hurricanes Katrina and Rita, and a member of the American Bar Association-TIPS Animal Disaster Relief Network. Previously, she was an adjunct professor of Animal Law at Lewis and Clark Law School in Portland Oregon, and a deputy district attorney in Oregon and Maui Hawaii.

Pam Dashiell has resided in the Lower Ninth Ward's Holy Cross neighborhood for 15 years. This longtime community activist is one of the founding members of Citizens Against Widening the Industrial Canal and currently serves as president of the Holy Cross Neighborhood Association.

Mark Davis has been Executive Director of the Coalition to Restore Coastal Louisiana since 1992. The Coalition is dedicated to the ecologic, cultural, and economic stewardship of Louisiana's coastal waters, wetlands, and barrier shorelines. Mr. Davis is an attorney and sits on a number of boards and commissions related to coastal wetlands and coastal science and policy.

Kathryn Destreza Kathryn Destreza has been with the Louisiana SPCA for 14 years. In February 2006, she became the Director of Humane Law Enforcement. Prior to becoming Director of Humane Law Enforcement, Destreza was the LA/SPCA's Chief Humane Officer and Director of Operations. During Hurricane Katrina, Destreza led her team of animal control officers in the Hurricane Katrina animal rescue work.

C. Al Dranguet is a professor of history at Southeastern Louisiana University. Prof. Dranguet has taught courses in environmental history and has published several articles on the history of Manchac Swamp.

Bernadette D'Souza is a domestic violence attorney with New Orleans Legal Assistance. Ms. D'Souza was awarded the 2003 Into Action Award by the Louisiana Coalition Against Domestic Violence for her work toward ending domestic violence in Louisiana.

Shawn Eller is a law clerk to Hon. Phyllis M. Keaty of the Louisiana 15th Judicial District Court in Lafayette.

Rod Emmer is the Executive Director, Louisiana Floodplain Management Association and participates on the National Conference Committee for the Association of State Floodplain Managers, co-teaches Coastal Zone Management at Louisiana State University, and has contracts with nonprofit organizations. He has been the project manager on environmental studies of riverine and coastal systems, development of local coastal programs, and facilitated public meetings and workshops for federal, state, local, and private clients. In 1997 he was the Program Chair and in 2003 the Co-chair for Local Arrangements for the national conference of the Association of State Floodplain Managers.

Monique Harden is the co-director of Advocates for Environmental Human Rights ("AEHR"), a nonprofit, public interest law firm in New Orleans, Louisiana, USA that she co-founded with attorney Nathalie Walker in 2002. Ms. Harden also coordinates international coalitions of community organizations advocating for human rights and environmental justice. Since Hurricane Katrina, Ms. Harden has been advocating for the right of Gulf Coast residents to return to healthy and safe neighborhoods. Her achievements in environmental justice and human rights has been featured in televised and print news, as well as books, magazines, and documentaries.

Roman Heleniak is a professor of history at Southeastern Louisiana University. Prof. Heleniak has published several articles on the history of Manchac Swamp. He has also published *Soldiers of the Law: A History of the Louisiana State Police*. He writes for the local newspaper and is researching Governor John McKeithen's use of the State Police to protect civil rights demonstrators in Louisiana.

Paul Kemp is a Geological Oceanographer and Active Board Member and former Director of the Coalition to Restore Coastal Louisiana. He holds a Ph.D From LSU and is currently an Associate Research Professor at LSU's School of the Coast and Environment.

Dr. Victor J. Law has been on the faculty of the Tulane School of Engineering for over 40 years. His areas of specialization include process design, control, simulation, and optimization. His involvement with co-burning of biomass with coal has been in conjunction with proposed research at one of Entergy's coal burning power stations.

Dr. R. Steve LeGore is the President of LeGore Environmental Associates, Inc. Dr. LeGore is an environmental professional with almost 30 years of applied experience in environmental analysis, project and research management, environmental policy, and institutional development. He currently serves as the pro bono Executive Director of the Association of Marine Laboratories of the Caribbean. Dr. LeGore's programs have included marine and coastal ecology; environmental policy evaluation; coastal development, aquatic toxicology, environmental chemistry, and hazardous waste issues. Dr. LeGore managed a preeminent marine research laboratory in Duxbury, MA for several years, and managed international operations for a leading full service environmental consulting firm in Florida for almost a decade. His international experience includes projects in almost 30 countries.

R. Michael Lyons is the Manager of Legal and Environmental Affairs for Louisiana Mid-Continent Oil and Gas Association. LMOGA is the only Louisiana trade association representing all facets of Louisiana's oil and gas industry, including the exploration and production, pipeline transportation, refining and marketing of Louisiana oil and gas. Mr. Lyons has represented LMOGA, practicing environmental law, since 1978, working on the state's reorganization of environmental agencies, development of environmental regulatory programs, and the introduction of environmental legislation dealing with all environmental media. He has significant expertise in Louisiana wetland issues.

Laura Maloney worked in the zoological profession in Philadelphia, New York and New Orleans. Laura has a Master's in Business Administration (MBA) from Tulane University and a bachelor's in Secondary Science Education from West Virginia University. Laura was selected as CityBusiness' Woman of the Year in 2005 and one of the Top 50 Women of the Year in 2003, 2005 ASPCA Presidential Service Award recipient, one of the city's eleven 2004 Movers & Shakers, and the 2004 Social Entrepreneur of the Year by Tulane University.

Patrick H. Martin is Campanile Professor of Mineral Law and has taught at the Louisiana State University Law Center since 1977. From 1982 to 1984 he served as the Commissioner of Conservation for the State of Louisiana. Prior to joining the faculty at LSU, Professor Martin taught at the University of Tulsa Law School. Before entering teaching, he was a staff attorney with Gulf Oil Corporation in New Orleans. Professor Martin holds the B.A., M.A., and Ph. D. degrees from Louisiana State University and the J. D. degree from the Duke University Law School. His publications include *Pooling and Unitization* (with B. Kramer) and *Williams & Meyers Oil and Gas Law* (update and revision author with B. Kramer, 2002) and three casebooks, *Jurisprudence: Text and Readings on the Philosophy of Law* (with Christie), *Oil and Gas Cases and Materials* (with Maxwell and Kramer) and *Economic Regulation: Energy, Transportation and Utilities* (with Pierce and Allison, 1980) as well as numerous articles on oil and gas law and energy regulation. Professor Martin has also served as an arbitrator, mediator and consultant in the oil and gas industry.

Hassan Mashriqui is an Assistant Professor at the LSU Hurricane Center. He holds a Ph.D in Civil Engineering from LSA. His research areas include ADCIRC Modeling for Coastal and Inland Flooding, Parallelized Hydrodynamic, Water Quality and Habitat Modeling Using Beowulf Type Clusters, Water Quality Modeling, and Wetland Restoration.

Park Moore has 10 years of state service including his time with the following Louisiana Departments: Wildlife and Fisheries; Culture, Recreation and Tourism; and Public Safety and Corrections. He came to state government after 14 years in the private sector, serving in management positions for environmental consulting firms and as staff biologist at Howard, Needles, Tammen & Bergendoff (HNTB). Moore, a graduate of Louisiana State

Speaker Biographies (very abridged)

University (Baton Rouge), earned a Bachelor of Science Degree in Forestry (1977) and a Master of Science Degree in Wildlife Management (1981). He earned certifications from The Wildlife Society as a Wildlife Biologist and The Institute for Hazardous Materials Management as a Hazardous Materials Manager.

Robert Moreau is the Station Manager at Southeastern Louisiana University's Turtle Cove Environmental Research Station. Mr. Moreau also teaches courses in environmental studies at Southeastern Louisiana University.

Jonathan Nash is the Robert C. Cudd Associate Professor of Environmental Law at Tulane Law School, where he teaches and researches in the areas of environmental law, law and economics, property, and civil procedure. Previously, Professor Nash was a Bigelow Fellow at the University of Chicago Law School. He holds a JD from NYU School of Law and an LLM from Harvard Law School.

Laurie Redman is an attorney in Baton Rouge, LA.

Charles Reith has a Ph.D. in Ecology from the Univ. of New Mexico, and has extensive experience as a technical expert and project manager in radioactive, toxic and municipal waste projects and with clean-up of contaminated sites. He currently runs Sustainable Systems, Inc., which provides consulting services on environmental and energy management. He is also an Adjunct Professor at Tulane.

Gary Shaffer obtained his B.S. and M.S. at the University of California at Santa Barbara in aquatic and population biology his Ph.D. in mathematical ecology at Louisiana State University. He is currently serving as Professor in the Department of Biological Sciences at Southeastern Louisiana University where he studies wetlands science and statistical ecology. Dr. Shaffer has published several dozen papers in refereed journals, has received over \$6 million in grants and contracts, and enjoys teaching undergraduate- and graduate-level courses in statistics and ecology as well as teaching K-12 teachers how to make science and math fun for their students.

Julia Sims is one of the premier photographers of Louisiana wildlife and her work has been featured in numerous prominent nature magazines. Ms. Sims has photographed extensively the vast Manchac Swamp between New Orleans and Baton Rouge.

Jerry Speir is a former director of the Tulane Institute for Environmental Law & Policy. He has been an active participant in environmental discussions in Louisiana for almost twenty years. In recent years, his research has focused on efforts to "re-invent" environmental law and regulation, especially in those aspects of reinvention involving the ISO 14001 environmental management system standard. He has been a member of the Multi-State Working Group on Environmental Management Systems (MSWG) since its inception, is a member of the U.S. Technical Advisory Group (TAG) to the ISO 14001 process, and has served as a U.S. delegate to the international ISO 14000 meetings. He is also a founding member of the NGO/ISO Initiative and a frequent speaker and writer on these issues.

Andy Taggart Andy represented Mississippi in 2002 on Tennessee Governor Don Sundquist's Bio-Tech Task Force and its Regionalism SubCommittee. He has recently been named to the Technology Steering Committee of the National Association of Counties. Andy is a Board Member of the Metro Planning Organization, Central Mississippi Planning and Development District and the Metro Jackson Chamber of Commerce. He is also a member of the Executive Committee and also serves as the Chairman of the Board for the Mississippi Center for Public Policy, formerly the Mississippi Family Council.

Jeff Thomas is an environmental attorney with Simon, Peragine, Smith & Redfearn law firm in New Orleans. Mr. Thomas has clerked for Earthjustice and served as an environmental policy analyst in Washington, DC.

R. Eugene Turner is a faculty member, Coastal Ecology Institute, Louisiana State University, and sometimes an oceanographer and at other times a wetland ecologist. He serves as Chair of the INTECOL Wetlands Working Group, and as Treasurer of INTECOL. He was the recipient of the 1998 National Wetland Award and, with Nancy Rabalais, of the 1999 Blasker Award for Science and Engineering for their work on the low oxygen zone off the Mississippi River (the DEAD ZONE).

Vijay Vaitheeswaran is the Global Environment & Energy Correspondent for *The Economist*. He has covered the politics, economics, business and technology involved in those topics since 1998. Mr. Vaitheeswaran is also a term member of the Council on Foreign Relations. He has lectured at Stanford, Yale and Oxford, and is an adjunct faculty member at New York University. He is a commentator on NPR and Marketplace radio, and a frequent guest on the BBC, PBS's *Newshour*, ABC's *Nightline* and other television programs. He is also the author of a well-received book on the future of energy, "Power to the People: How the Coming Energy Revolution will Transform an Industry, Change our Lives, and Maybe Even Save the Planet."

Robert R.M. Verchick holds the Gauthier-St. Martin Chair in Environmental Law at Loyola University New Orleans. He is a graduate of Stanford University and of Harvard Law School. Professor Verchick has been a visiting professor at several law schools including Beijing University, Aarhus University in Denmark, and Lewis & Clark in Portland, Oregon. He is also a Research Scholar with the Center for Progressive Reform in Washington, D.C. (www.progressivereform.org), and serves on that organization's board. Professor Verchick's research emphasizes environmental federalism, administrative decision making, and environmental justice. This year he has lectured widely about the aftermath of Hurricane Katrina and testified twice before Congress on the subjects of urban contamination in New Orleans and hurricane protection. He is currently working on a book about the rebuilding of New Orleans.

Nathalie Walker has provided legal counsel and advocacy support for over fifteen years to communities struggling for environmental justice. In 2003, Ms. Walker, along with Monique Harden, co-founded Advocates for Environmental Human Rights ("AEHR"), a public interest law firm based in New Orleans. Ms. Walker was a charter member of and served for several years on the National Environmental Justice Advisory Council ("NEJAC"), and has authored and co-authored numerous reports and papers on environmental justice issues. Her environmental justice advocacy has been featured in several books, documentaries, and news articles.

Joel Waltzer is an attorney with Waltzer & Associates law firm in New Orleans.

Conrad S.P. "Duke" Williams is an environmental attorney with St. Martin and Williams law firm in Houma, LA.



Acknowledgements

The organizers would like to give special thanks to the following:

For Making this Thing a Reality

The Students of Tulane's **Environmental Law Society** Executive Committee and **Student Volunteers**
(the Creative and Logistical Soul of the Conference)

Lauren Hassler
Rina Eisenberg
Kathy Harrison
Kat Rito
J.C. Cronin
Charlie Walsh

Elizabeth Nagelin
Alicia Smith
Machelle Lee
Jennifer Hoekstra
Mary Reichert
Jen Greip

Tina Hansen
Andy Jacoby
Valerie Auger
Todd Campbell
Jon Binder
Rick Fabiani

For Co-Sponsoring and Co-Creating Panels

New Orleans Sierra Club
Louisiana Environmental Action Network
Tulane International Law Society
Tulane Animal Rights Law Society
Tulane Family Law Society
US Army Corp of Engineers

Tulane Women's Law Society
Tulane Human Rights Law Society
Tulane Black Law Students Association
Tulane Federalist Society
Gulf Coast Restoration Network
Louisiana Department of Environmental Quality

For Consistent Support and Participation

Robert Moreau

and the Students of Southeastern Louisiana University in Hammond, LA

Keynote Sponsor:

Alliance for Affordable Energy

Financial Support:

Louisiana Environmental Action Network

Sierra Club

Environmental Law Institute/Simon

James Guilbeau



For (Occasional) Sage Advice and Technical Support

Oliver Houck & Eric Dannenmaier

And for a range of additional support far too important and vast to reduce to writing
The Tulane, New Orleans, Gulf Coast, and Washington DC, and Global Environmental Communities
(the usual suspects)

Oh, and by the way, we do more than just teach environmental law at Tulane:

TULANE'S ENVIRONMENTAL LAW PROGRAM

The Tulane Environmental Law Program is one of the largest and most diverse in the United States. Each year Tulane graduates more than forty Juris Doctor and fifteen Masters candidates with specialties in environmental law. What distinguishes Tulane's program in addition to the experience of its faculty is the scholarship of its journal, the strength of its clinic, the international projects of its institute, and the momentum provided by an engaged group of students. These

four components of Tulane's program—in the extraordinary setting of New Orleans, the Lower Mississippi River, and the Gulf Coast—provide a unique academic experience for those with an interest in environmental law and international sustainable developmental policy. For more information, contact the Law School's admissions office at John Giffen Weinmann Hall, Tulane University, 6329 Freret Street. (504) 862-5930, or its web site at <http://www.law.tulane.edu>.