

# TULANE SCIENCE SCHOLARS PROGRAM



## Academic Year 2009-2010

[tulane.edu/~tssp/](http://tulane.edu/~tssp/)



The Tulane Science Scholars Program (TSSP) is a selective program for high school students who have exceptional talent in the sciences and mathematics. The TSSP will hold classes at Tulane from 10am–12noon on Saturdays during the 2009-2010 academic year. The classes will meet 8 times between September 12<sup>th</sup> and November 21<sup>st</sup>, 2009 and 8 times between January 23<sup>rd</sup> and April 25<sup>th</sup>, 2010. Instructors are science, mathematics, and engineering faculty members who are actively engaged in research. Courses will involve a combination of lecture and hands-on experience. The specific topics have not been finalized; however, courses in the past have included:

**Real-Life Biology (Spring 2007)**

**Experience Biomedical Engineering (Spring 2007)**

**Spectroscopy and Nanotechnology (Spring 2007)**

**Experience in Cancer (Fall 2007)**

**Taking on the Energy Crunch (Spring 2008)**

**Global Warming, Energy & Atm. Change (Fall 2008)**

**Robotics in Biomedical Engineering (Fall 2008)**

**The Discovery of Time (Fall 2008)**

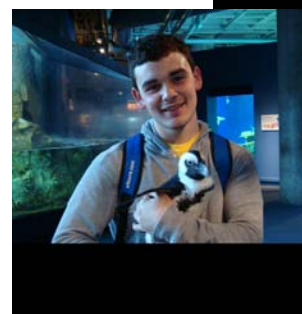
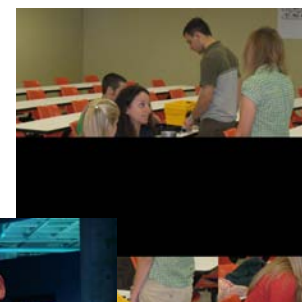
**Drug Effects on the Behavior of Rats (Spring 2009)**

**How Things Work–Reverse Engineering (Spring 2009)**

**Creativity in**

**Engineering**

**(Fall 2008)**



**Explorations  
in Animal  
Behavior**

**(Spring 2009)**

This program has a \$250 fee for the year. This may be waived in cases of financial hardship, depending upon funding levels for the 2009-10 year.

The TSSP is now accepting applications for the 2009-2010 academic year. Nominees should be entering 11<sup>th</sup> or 12<sup>th</sup> grade (exceptional 10<sup>th</sup> graders will be considered) and have a strong interest in science and mathematics. The TSSP will select a maximum of 50 students for the program. The selection of students will be based upon the following information:

1. Student Essay
2. Teacher Recommendation
3. School Transcript

If you are interested in applying to this program, you may obtain an application form and a teacher recommendation form from the web site at [tulane.edu/~tssp/](http://tulane.edu/~tssp/). The form is to be completed and returned directly to the TSSP. Questions may be addressed to Dr. Annette Oertling, TSSP Director, at [.oertling@tulane.edu](mailto:.oertling@tulane.edu).

**INITIAL APPLICATIONS ARE DUE JUNE 1<sup>ST</sup>**

**Results will be announced by June 15<sup>th</sup>**

**Additional applications will be accepted until the program is full.**