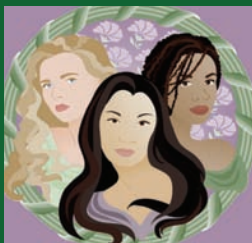


Tulane Xavier National Center of Excellence in Women's Health



Summer 2008

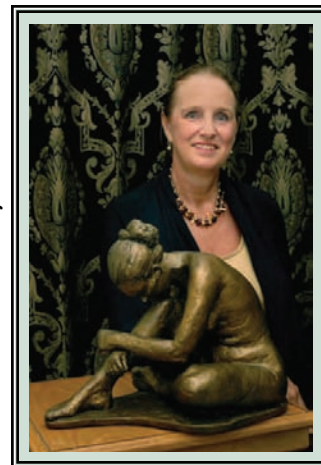


Meeting Community Needs

Cecil Usdin Professorship in Women's Health

Dr. Gene Usdin established the Cecile Usdin Professorship in Women's Health in honor of his late wife Cecile and her lifelong service and volunteerism in the New Orleans community. Cecil Usdin was also an accomplished artist. Her sculpture "Contemplation", shown here with Dr. Magnus, captures the spirit of womanhood and serves as the focal point to the entrance of the Tulane Xavier National Center of Excellence in Women's Health (TUXCOE).

Dr. Magnus, Director of TUXCOE, was honored as the first recipient of the Professorship. Dr. Magnus chairs the Maternal and Child Health section in Tulane University's School of Public Health and Tropical Medicine and is acting Chair of Community Health Sciences. In June Dr. Usdin and Dr. Magnus were honored at a luncheon at Windsor Court Hotel in June.



New Staff Members

Senior Program Manager
Stacey C. Cunningham, M.S.



Senior Program Coordinator
Shokufeh M. Ramirez, MPH



Health Educator
Melissa C. Lovell, MPH



STAND Program Manager
Nisa Galeta, MPH



These outstanding women have richly diverse backgrounds and knowledge, introducing fresh and innovative ideas to The Mary Amelia Douglas-Whited Community Women's Health Education Center for its community programs. Read more about them and our programs on our website: <http://www.tuxcoe.tulane.edu>

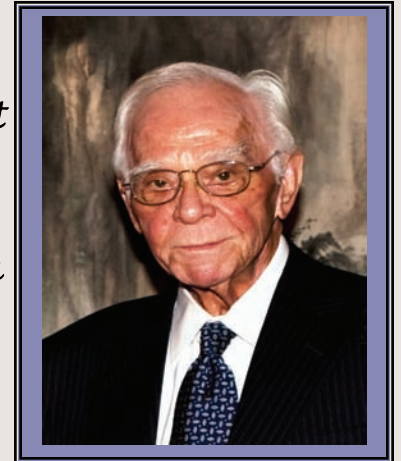
Tulane Xavier National Center of Excellence in Women's Health

In Memoriam

Joe Dorsey Smith, Jr.

The Tulane Xavier National Center of Excellence in Women's Health has lost a great friend and humanitarian, Mr. Joe Smith, Jr.

Mr. Smith was highly respected as a leader in the newspaper industry for 50 years. His efforts are legendary in Louisiana, the South, and the nation.



Mr. Joe Smith, Jr. and his wife Bertie Deming Smith, are long time supporters of Tulane and the community. They have been very generous to the Tulane Xavier National Center of Excellence in Women's Health with their time and guidance.

The stewardship for the Jane Wilson Smith Lectureship was awarded to TUXCOE in 2001, in memory of his first wife, Jane. It is because of Mr. Smith's compassion for the community and its welfare that TUXCOE has been able to educate hundreds of women about their health and that of their families. We are proud to continue this work in his name.

Our office and staff were honored that Mr. and Mrs. Joe Smith attended our 6th Annual Lectureship, in November 2007. We will miss his leadership, companionship and his great sense of humor.

Tulane Xavier National Center of Excellence in Women's Health

Director's Insight

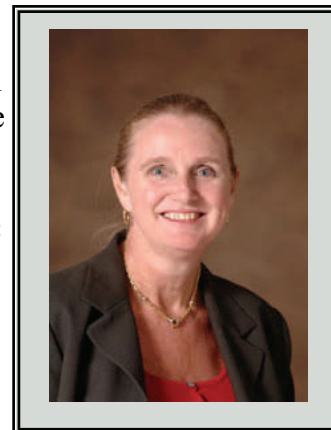
Greetings Friends,

Our Center has renewed itself to meet the pressing needs of our community through innovative programs tailored to our changing life here in the New Orleans area. We address these needs through community capacity building, leadership development, health education, advocacy and research initiatives. We have been awarded five additional years from the NIH for our *Building Interdisciplinary Research Career's in Women's Health* grant with a focus on leadership and career development of junior faculty.

The importance of social support is highlighted in our *STAND* program addressing stress and depression. *Community Women's Health Advocates* are trained to provide supportive opportunities of sharing and individual dialogues with other women. Our health education program has expanded with *Healthy TV*; our newest computer-based multimedia program. Utilizing an easy TV-like interface seniors can educate themselves about diabetes. In addition the Frost Foundation and the Jane Wilson Smith Lectureship have provided hundreds of women access to the latest health education information and materials through seminars, lectures, and health fairs. I am very pleased that all of these elements will continue as we further our programs and activities to serve our community.

I wish you and your family a safe and pleasant summer.

Jeanette H. Magnus, MD, PhD



American Public Health Association 2007 Annual Conference

The Tulane Xavier National Center of Excellence in Women's Health staff and students presented nine abstracts at the annual APHA 2007 conference in Washington, DC. Pictured from left are: Christina Wadhawani, Ryan Coffman, Dr. Jeanette Magnus, Shawna Herbst, Melissa Lovell, Shokufeh Ramirez and Antor Ndep.

Ola AN, Tarver M, Rome G, Magnus JH. Assessing New Orleans' women's physical and psychosocial response to the devastation caused by Hurricane Katrina: A qualitative case study.

Wadhvani C, Ola AN, Tarver M, Magnus JH. Gaining access into a Vietnamese American community in New Orleans: A lesson in cultural competency.

Tarver M, Magnus JH. In the face of a disaster or emergency, would Louisiana women breastfeed?

Coffman R, Ola AN, Tarver M, Rome G, Magnus JH. Worth a Thousand Words: Stress reduction in post-Katrina New Orleans among women through a combined PhotoVoice and Freirian Praxis methodology approach.

Herbst SM, Ola AN, Valliere J, Zeanah P, Magnus JH. Lay Health Advisors: A Self-Help Model for Improving Mental Health Post-Disaster.

Herbst SM, Ola AN, Valliere J, Zeanah P, Magnus JH. Lay Health Educators: An Opportunity for Community Education Post Disaster.

Tarver M, Magnus JH. What can Louisiana do to improve breastfeeding duration rates?

Ola AN, Wadhvani C, Tarver M, Magnus JH. Perceived stress of New Orleans Vietnamese American women affected by Hurricane Katrina: A case study.

Hixon J, Magnus JH. APHA as a teaching tool for maternal and child health students.



Tulane Xavier National Center of Excellence in Women's Health

Jane Wilson Smith Lectureship

The Jane Wilson Smith Lectureship endowment was awarded to the School of Public Health in 1997. The Tulane Xavier National Center of Excellence in Women's Health has been the managing center since 2001. The lectureship enhances the education of community women on health education issues; and in particular stress, substance abuse, and depression.

In November the 2007 Annual Jane Wilson Smith Lectureship honored women educators and attracted over 100 area women from diverse communities including Orleans, Jefferson, St. Bernard, and Plaquemines parishes; Lay Health Advisors and community collaborators; local city council representatives; and faculty, students and other academic community members. Guest speaker Stacey C. Cunningham deliv-

ered the lecture entitled, "Being Community Women: Recognizing our strength; harnessing our power."

The lecture was a phenomenal success, and reinforced the abilities of women to face and rise above the cornucopia of problems existing in our area today.

Plans are already underway for the 2008 lecture.



6th Annual Women's Health Research Day

An integral part of the Building Interdisciplinary Research Careers in Women's Health (**BIRCWH NIH K12**) award has been our **Annual Women's Health Research Marathon Day (WHRD)**. The WHRD was held in the Health Sciences Center's new Diboll Auditorium, and was also sited as part of National Women's Health Week.

This day-long event highlighted the latest health research from the Tulane University Health Sciences Center, the School of Medicine, our BIRCWH Scholars and other Mary Amelia Center faculty affiliates.

Presentations covered a range of women's health issues, populations, and research disciplines. Each year a presentation is selected for outstanding cutting-edge research in women's health. This year's award was

presented to Dr. Xu Xiong, Associate Professor, in the Department of Epidemiology, SPHTM.

The WHRD attracted a diverse group of 50+ Tulane faculty, staff and students, and various research community partners. An evaluation of the day's events indicated that attendees acquired knowledge for future research, and a desire for continued venues on women's health research.



Thought for the Day

What lies behind us and what lies before us are tiny matters compared to what lies within us.

- Oliver Wendell Holmes